



UPDATED NOVEMBER 12, 2020

2020-2021 WINTER SPORTS VENUE INFORMATION



BHMSD Athletics Goal: A successful, safe start and finish to the winter sports season!

All BHMSD venues will promote safe, healthy environments by:

- Requiring all fans to wear face covering, shield, or masks at all indoor events whenever maintaining social distancing is not possible.
- Requiring all staff to wear masks in times that social distancing is not possible.
- Placing informational signage at entrances and exits to maintain symptom awareness.
- Providing hand sanitizers at entrances.
- Limiting restroom occupancy to no more than 3 people.
- Limiting all event attendance to 25% of maximum capacity for each section at each venue.

Remember, our student-athletes need your help to promote a safe, healthy environment!

BLUFFTON HIGH SCHOOL GYMNASIUM

Boys Basketball Games:

- Maximum of 431 attendees
(25% of seating capacity)
 - 247 home fans
(including 35 HS student)
 - 184 visiting fans
- Vouchers will be utilized for all events
- Each student-athlete will receive 4 vouchers
- All fans will enter through Door #5

Girls Basketball Games:

- Maximum of 431 attendees
(25% of seating capacity)
 - 247 home fans
(including 35 HS student)
 - 184 visiting fans
- Vouchers will be utilized for all events
- Each student-athlete will receive 4 vouchers
- All fans will enter through Door #5

Wrestling Matches:

- Maximum of 396 attendees
(25% of seating capacity)
 - Only upper bleacher areas available
 - 212 home fans
 - 184 visiting fans
- Vouchers will be utilized for all events
- All fans will enter through Door #5

BLUFFTON MIDDLE SCHOOL GYMNASIUM

Due to limited seating capacity in the gym area, all seating is reserved for home fans only.

MS Boys & Girls Basketball Games:

- Maximum of 122 attendees
(25% of seating capacity)
- Vouchers will be utilized for all events
- Each student-athlete will receive 3 vouchers
- All fans will enter through Door #5

MS Wrestling Matches:

- Maximum of 122 attendees
(25% of seating capacity)
- Vouchers will be utilized for all events
- Each student-athlete will receive 3 vouchers
- All fans will enter through Door #5

BLUFFTON MIDDLE SCHOOL POOL

Due to limited seating capacity in the pool area, all seating is reserved for home fans only.

HS Boys & Girls Swimming Meets:

- Maximum of 54 attendees
(25% of seating capacity)
- Each student-athlete will receive 2 voucher
- Vouchers will be utilized for all events
- All fans will enter through Door #5

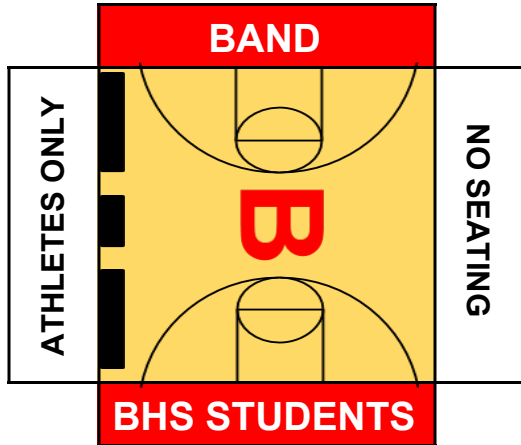
MS Boys & Girls Swimming Meets:

- Maximum of 54 attendees
(25% of seating capacity)
- Vouchers will be utilized for all events
- All fans will enter through Door #5

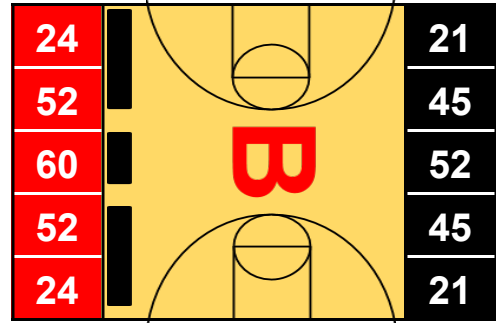
BLUFFTON HIGH SCHOOL

25% Capacity

Lower Section



Upper Section



Home

Students - Lower	35
Upper Section	<u>212</u>
	247

Visitor

Lower Section	0
Upper Section	<u>184</u>
	184

BLUFFTON ATHLETICS

Steve Thompson Athletic Director
sthompson@bhmsd.org

#1 Tiger Trail
Phone (260) 824-5033

Bluffton, IN 46714
Fax (260) 824-6001

BLUFFTON ATHLETICS Home Attendance Policy Updated 11/19/2020

In respect of Governor Holcomb's Executive Order and in consideration of the current Covid-19 conditions in Wells County, the Bluffton Athletic Department will alter the attendance policy of home athletic events. Wells County is in the Red status which will prohibit a multitude of fans from attending games. Until this status changes, the general admission and event personnel attendance for home Bluffton-Harrison MSD events are:

- Participants in the event and supporting personnel will be permitted to enter the event.
- In regards to event spectators, the only fans permitted to attend the event will be all parents, guardians or siblings residing in the immediate household of a participant
 - Unfortunately this prohibits: family friends, grandparents, aunts & uncles, cousins, etc., from attending events.
- BHMSD students will not be permitted to watch the event as a spectator unless they are a sibling or immediate family member to a participant
- In the case of a divorced or separated family, the step-parents and step-siblings will be allowed to purchase a ticket to attend the event.
- Participants will not be allowed to give any unused tickets to another party.
- All spectators will be required to wear masks and social distance at all times.

Fan guidelines will return to 25% facility occupancy when Wells County returns to Orange status.

BLUFFTON HIGH SCHOOL

Est. 1883